

## **AGENDA SUPPLEMENT**

### **People Scrutiny Committee**

**To:** Councillors Burton (Chair), Waller (Vice-Chair),  
Cuthbertson, Mason, Moroney, D Myers, Nelson,  
Runciman, and Steward

**Date:** Wednesday, 24 June 2026

**Time:** 5.30 pm

**Venue:** West Offices - Station Rise, York YO1 6GA

The Agenda for the above meeting was published on **Tuesday, 16 June 2026**. The attached additional documents are now available for the following agenda item:

- 5. Housing Allocations Policy Review** (Pages 3 - 14)  
The report for this item sets out proposed updates to the Council's Housing Allocations Policy to ensure legal compliance, enhance transparency and consistency, and support effective use of social housing stock.  
This agenda supplement contains presentation slides relating to the Housing Allocations Policy Refresh.

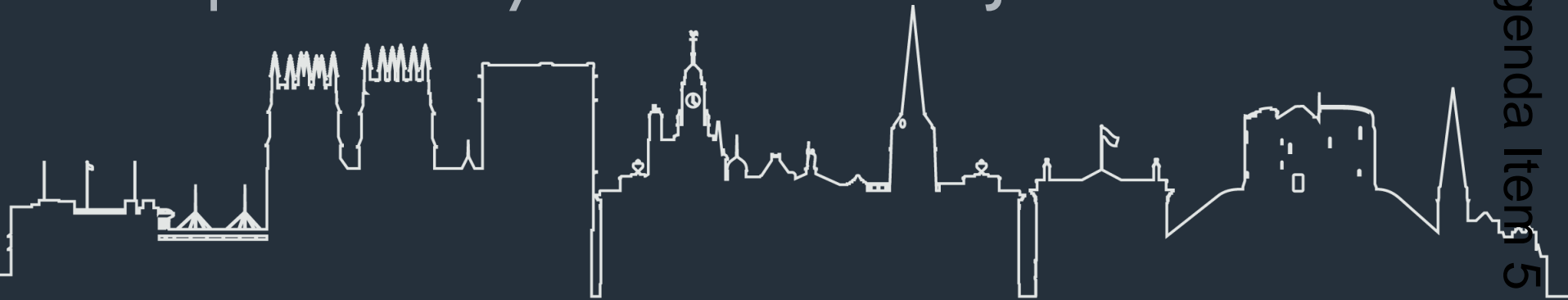
This agenda supplement was published on  
**Wednesday, 24 June 2026**

This page is intentionally left blank

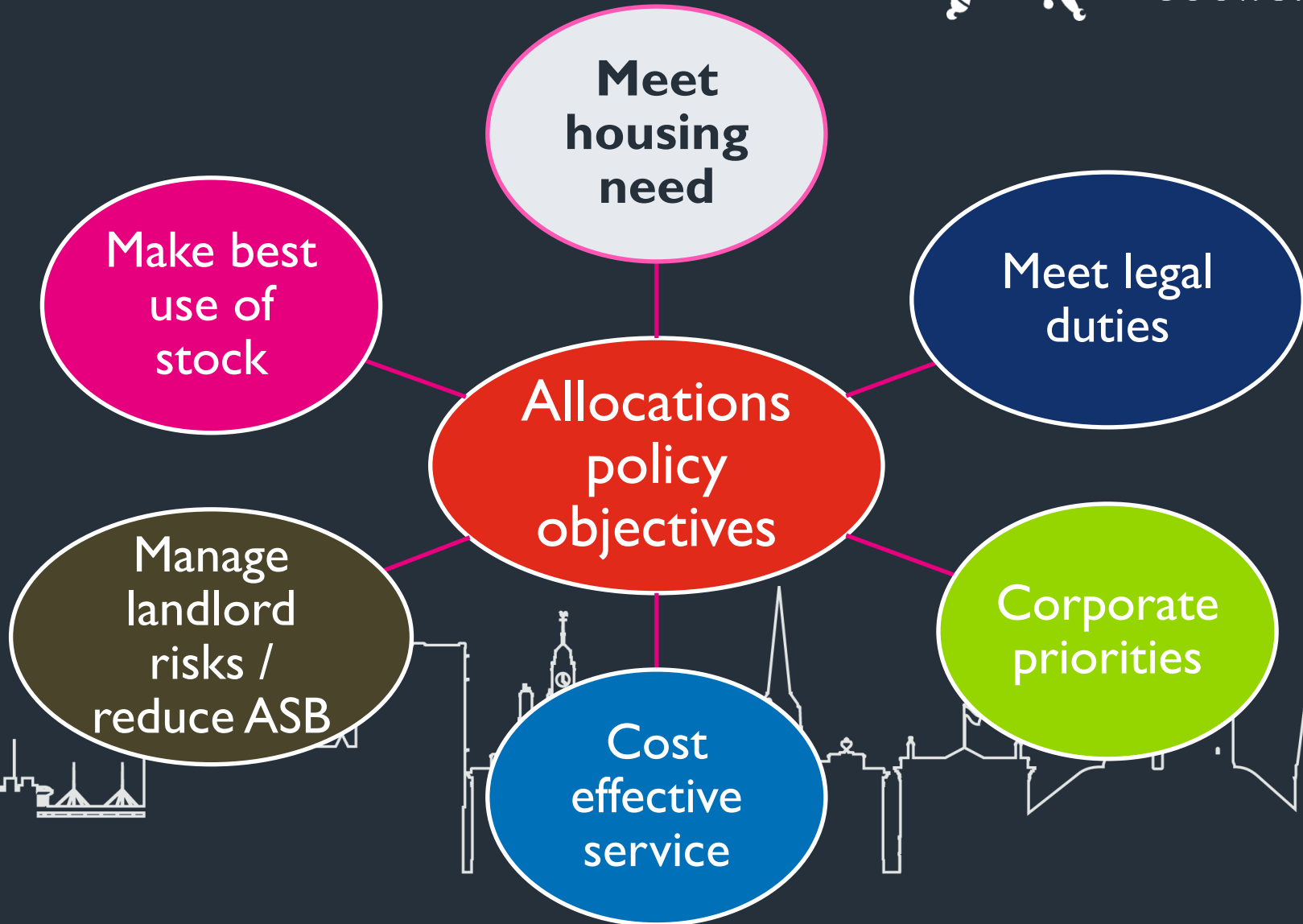
# Housing Allocations Policy Refresh

Denis Southall, Head of Housing  
Management and Housing Options

People Scrutiny Committee 24 June 2026



# Balancing act



# Banding structure



Banding	Applicant assessed needs examples
Emergency	Care leavers protocol Unable to access home
Gold	Saturator homelessness Significant health and wellbeing need Resettlement from CYC hostel
Silver	Lower level overcrowding Moderate health and wellbeing need
Bronze	Independent Living Community eligible with no other priority needs

# Needs data: May 2026



Bedrooms need	Bronze Band	Silver Band	Gold Band	Emergency Band	Total
1	330	380	107	7	824
2	31	196	76	1	304
3	3	156	47	1	207
4	0	39	33	0	72
5	0	1	5	0	6
<b>Total</b>	<b>364</b>	<b>773</b>	<b>268</b>	<b>9</b>	<b>1414</b>

Page 6

**700** properties let during 2025/26

# Aims of policy refresh

Achieve best outcomes from social housing

Build on other strategies and protocols

Use lessons learned from changing context

Meet new government legal requirements

Use feedback from tenants and other stakeholders

Subject to consultation

Page 7

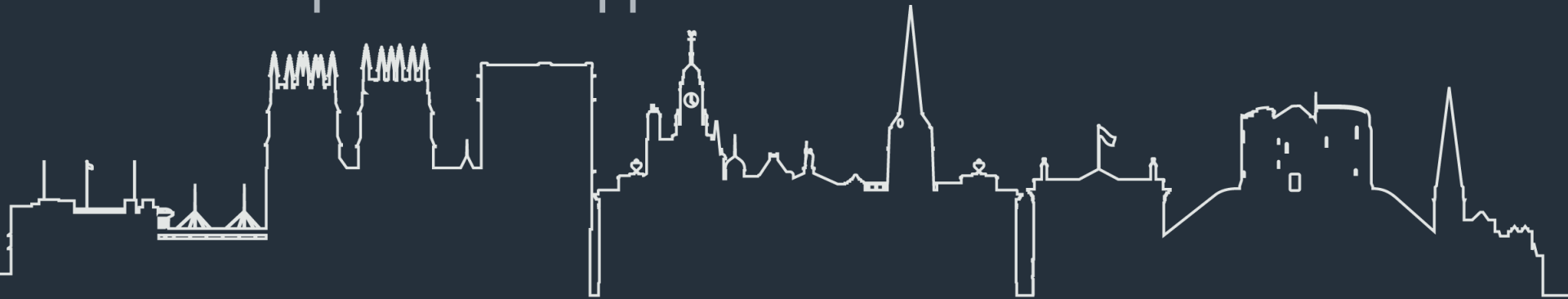
# Domestic Abuse support

- Enhance access through homelessness pathways, with safeguards
- Address barriers to rehousing through rent arrears
- Meet government requirements removing local connection in some circumstances
- Reflect CYC Domestic Abuse Resident and Tenant Policy and utilise DASH risk assessments

# Meeting other new government requirements



- Removing local connection barriers for more armed forces personnel and veterans
- Expanding family definition of the armed forces community
- Additional priority for armed forces community in certain circumstances
- Care experienced applicants – removed local connection

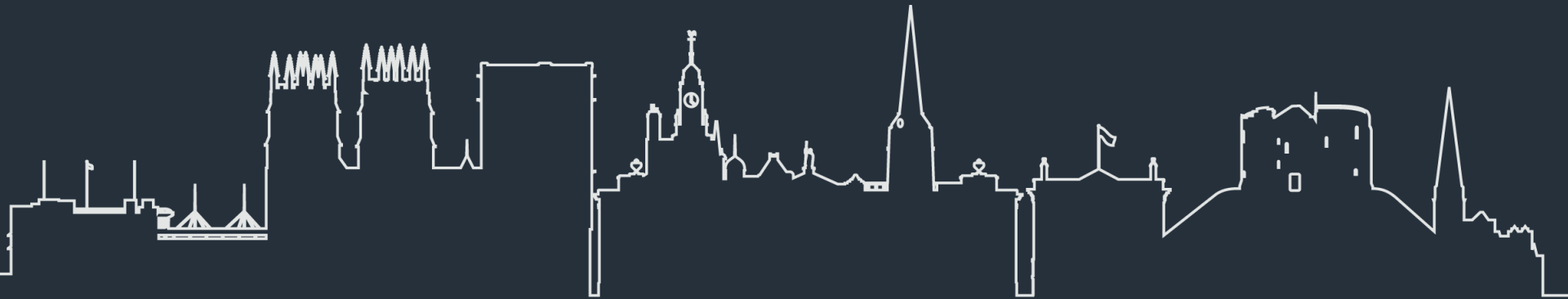


# Health and wellbeing approach

- Revised health and wellbeing needs scope to incorporate complex needs e.g. mental health
- More clarity on additional bedroom needs
- More targeting of adapted accessible homes to best meet needs
- Multiagency working – e.g. Offender Initiative

# Focus on transparency

- Direct let decision principles and updated criteria
- Revised management review process
- Evidence based customer communication and clear expectations setting
- Multidisciplinary complex needs allocations panel to support needs assessment and allocations

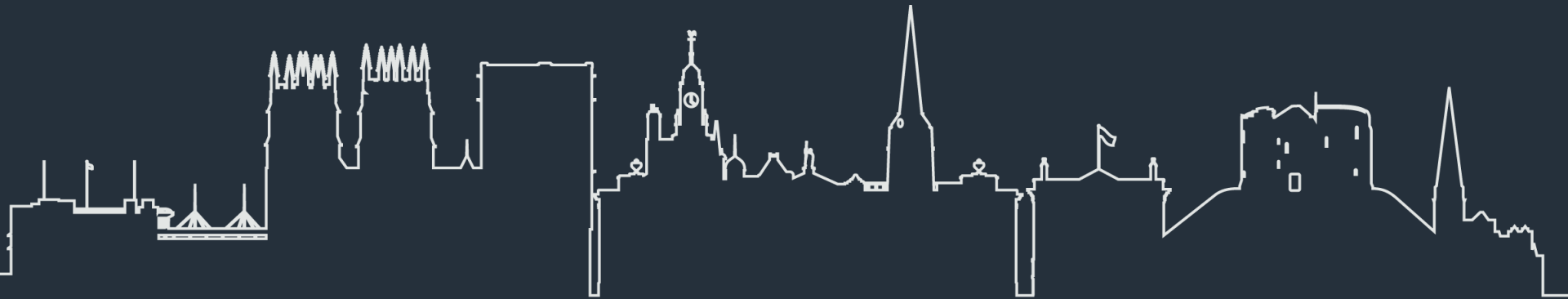


# Streamlined need assessments

- Including extra child in household for pregnancy 20+ weeks
- Updated 16-17 year olds provision to reflect multidisciplinary pathway
- “intractable neighbour disputes” where evidenced
- Revised income qualification approach

# Best use of stock

- Rightsizing additional bedroom offer for qualifying under-occupying tenants
- Multiple adult households restricted to flats/maisonettes only
- Social landlord succession right clarified



# Next steps

- Further consultation
- Final drafting
- Presenting for approval – late Summer 2026
- Elements of implementation dependent on ICT updates

